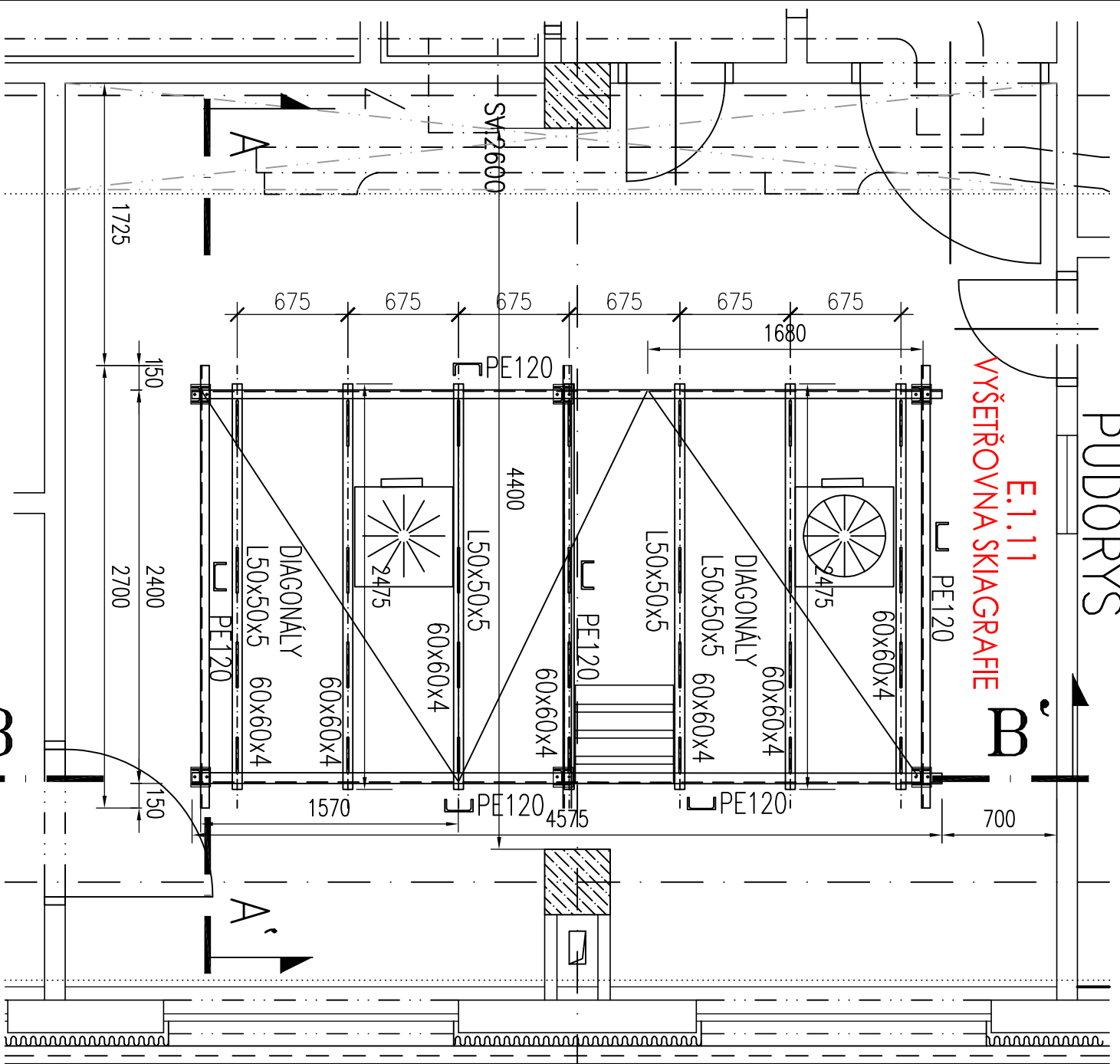


# PUDORYS

# VÝPOČTOVÝ MODEL

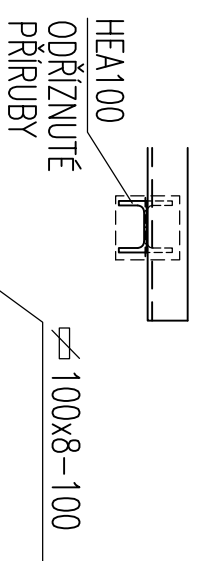
11.11.11

## VYŠETŘOVNÁ SKIAGRAFIE

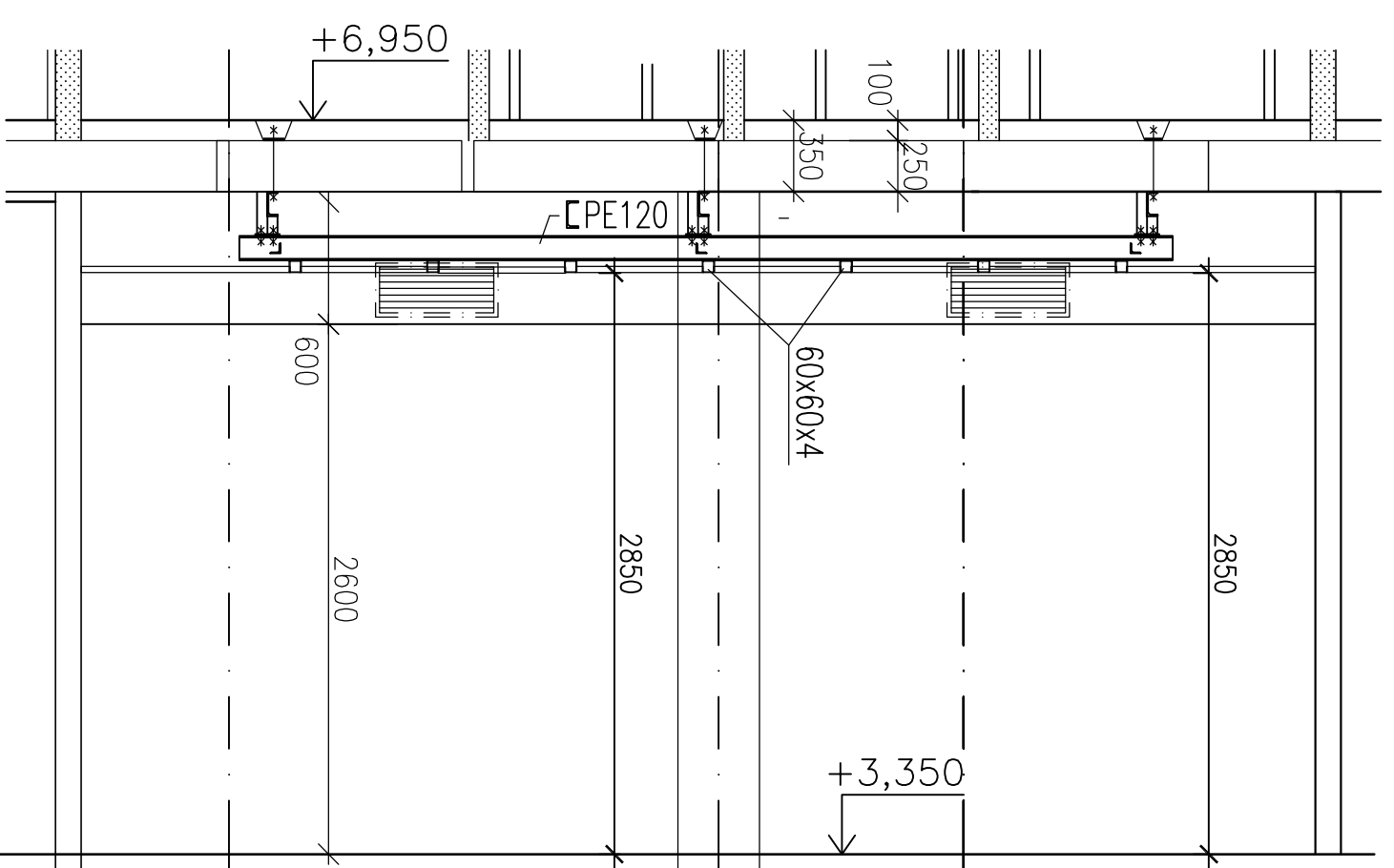


# DETAIL ZÁVĚSU

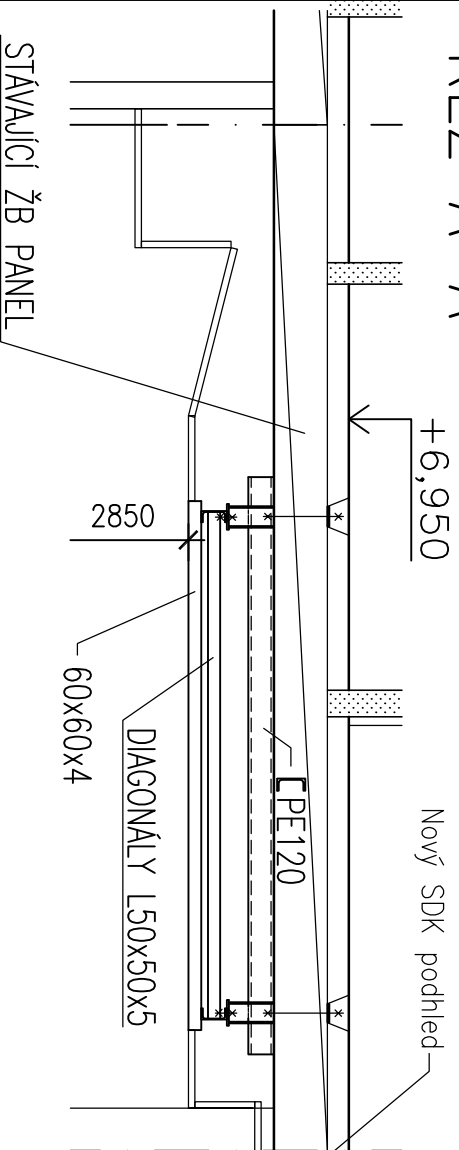
# ŘEZ 1-1



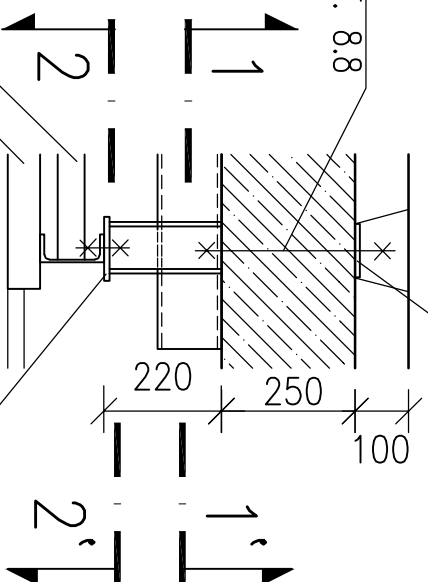
ŘEZ B-B'



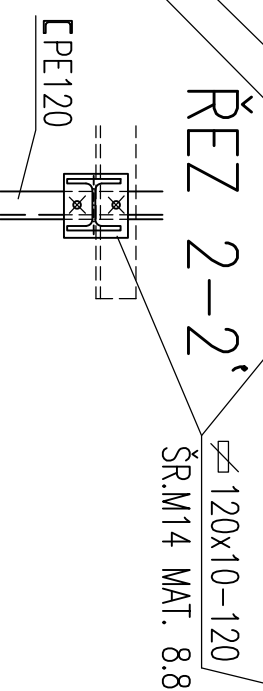
# RĚZ A-A'



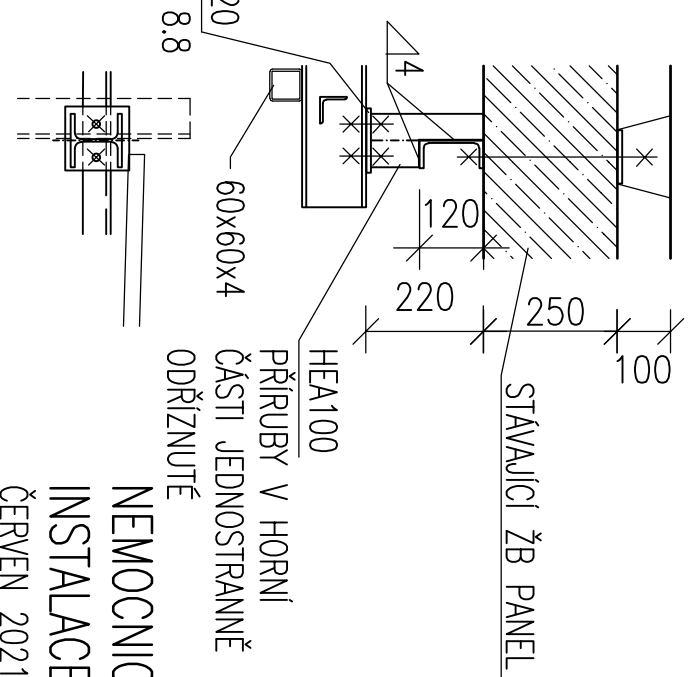
ZÁVIT. TYČE  
Ø14mm MAT. 8.8



REV 2-2,



HEA100  
PŘÍRUBY V HORNÍ  
ČÁSTI JEDNOSTRANĚ  
ODŘÍZNUTÉ



NEMOCNICE JIČÍN  
INSTALACE RTG